

OWNERS MANUAL

All information contained in this owner manual is the property of P. A. Ignition Co., Inc. and cannot be duplicated in whole or in part by any means or disseminated or distributed without the prior written consent of P. A. Ignitions Co., Inc. The information in this manual has been carefully compiled and checked for accuracy and is believed to be correct. However, P. A. Ignition Co., accepts no responsibility for inaccuracies which may occur. All specifications in this manual are subject to change without notice.

Power Arc Ignitions Co., Inc.
2518 N.E. 102 Ave.
Ankeny, IA 50021
(515) 964-7608

The following customer actions automatically voids the warranty.

1) Use of any other spark plug wires other than resistor type wires with at least 3,000 ohms of resistance. 2) Use of non-resistor spark plugs. 3) Drilling or cutting of any kind into the module. 4) Incorrect wiring of the module. 5) Use of module on systems with defective charging systems. 6) Use of defective coils. 7) Directly shorting the coil output wires to +12 VDC. 8) Physical damage to the ignition. 9) Any other items covered in the warranty & instruction manual.

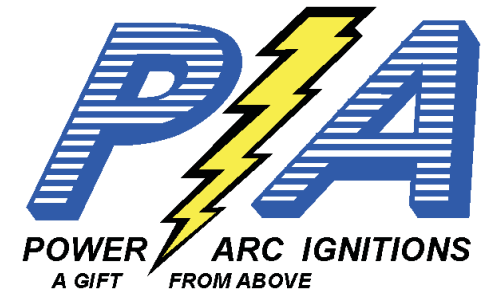
LIMITED WARRANTY

P. A. Ignition Co., Inc. warrants to the original retail purchaser of a PowerArc IDS ignition that it will, free of charge, repair or replace at its own option, the product if returned to P. A. Ignition Co., Inc. within 6 months after purchase and if found by P. A. Ignition Co., Inc. to be defective in material or workmanship. This warranty is not transferable by the purchaser and shall be voided: if alterations not authorized by P. A. Ignition Co., Inc. are made in the equipment or if the serial number or date of manufacture has been altered, defaced or removed. Nor does this warranty apply: if the equipment has been subjected to accident, misuse, improper hookup, damaged by flood, fire, or act of God, or has been used on circuits or voltages other than those indicated in its instruction manual. If the equipment is found to be defective in materials or workmanship the equipment will be returned and P. A. Ignition Co., Inc. will pay the return shipping (this does not include next day shipping, second day shipping, shipments outside of the continental U. S. A. or shipments outside of the U.S.A.). All warranty work outside of the U.S.A. must include prepayment of return shipping. Customs, duties or tariffs are not covered by this warranty. If the equipment is found to be defective but is due to customer misuse (as described in warranty) P. A. Ignition Co., Inc. will notify the customer and if the customer wants the defective equipment returned P. A. Ignition Co., Inc. will return the equipment C.O.D. freight. If the equipment is found to be in operational order when returned to the factory P. A. Ignition Co., Inc. will return the module with a \$30.00 service charge plus freight and C.O.D. Charges.

Any module returned under the warranty must include note of explanation of failure and be accompanied by a dated bill of sale.

P. A. Ignition Co., Inc. warranty obligations are limited to those set forth herein and no other obligations, expressed or implied, are assumed by P. A. Ignitions Co., Inc.

Some states do not allow the exclusions or limitations of incidental or consequential damages, or allow limitations on how long an implied warranty lasts, so the above limitations or exclusions may not apply to you. This warranty gives you specific legal rights, and you may also have other rights which vary from state to state.



POWER ARC IDS-PBP OWNER'S MANUAL



Pin Bed Programmer

➤ **Required to Program and Update firmware of all C Model IDS Ignitions**

Note: PLC (Program Link Cable Required) to interface with computer. PLC sold separately

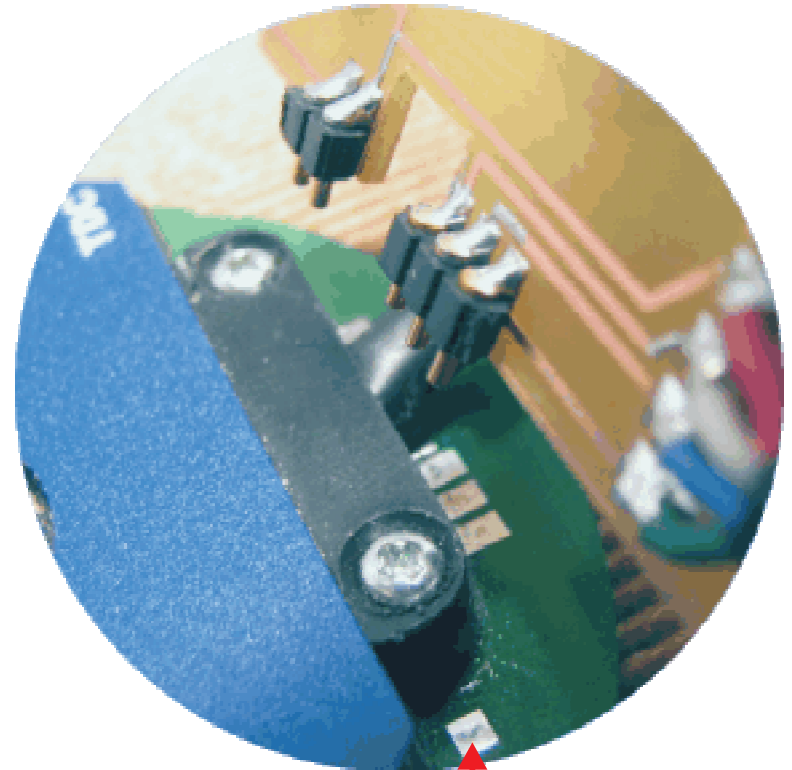
POWER ARC IGNITIONS CO., INC.
2518 N. E. 102 AVE.
ANKENY, IA 50021
(515) 964-7608

<http://www.powerarc.com>
PATENT #4,951,629 OTHER PATENTS PENDING

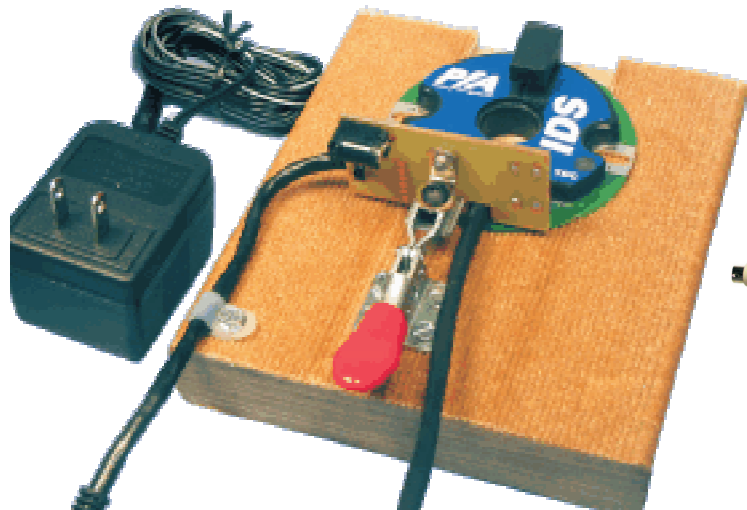
PBP (Pin Bed Programmer) along with PLC (Program Link Cable) allows the user to reprogram C model IDS ignitions.

1. Attach supplied Power Supply to PBP and plug into AC Outlet.
2. Using the PLC hooked to an IBM Compatible Computer running Windows with the IDS program installed, plug the 9 pin Din Connect into the connector on the PBP.
3. Place Ignition on PBP, wiring harness facing Printed Circuit Board. Slide Ignition bottom in guide slot until it seats.
4. Close the PBP clamp, making sure the 5 pins meet the Ignition PC Board matching the Program pads. (See diagram at right)
5. Using the IDS program, open the Help - About dialog and Read the Ignition Module status. If you can not establish a connection to module make sure you have selected the COM port using the Settings - Serial Port Dialog menu. (See IDS Help for complete programming instructions).
6. Make sure Ignition wires are not touching each other.
7. The Ignition is ready to be programmed using the IDS program.

The IDS program (version 2.1.2 and above) can be used to program the Rev Limit without effecting or knowing what the existing timing curve in Ignition Module. (See IDS Help for more information).



Ignitions with a square pad can be pin bed programmed.



PLC Program Link

USB to Serial adapter may be required if your Laptop does not have a Serial Port.

